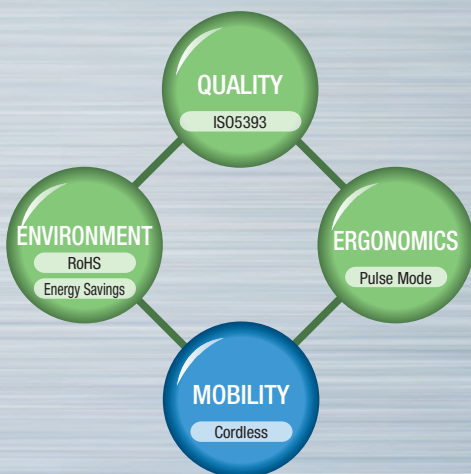




With us, the Future



Electric Pulse Tool Now available on Battery Tool



Battery Tool

Handy 2000 cordless

Transducerized Electric Handheld Nutrunner

World's first electric pulse handheld tool brings you evolution in assembly

ESTIC makes a change for manufacturing with a new generation handheld tool

Torque Transducer

Strain gauge transducer is adopted. High performance is guaranteed by 8 gauges structure and Auto cancel function for disturbance.



Brushless Servo Motor

High accuracy, high speed response brushless servo motor guarantees high quality fastening. Rotating speed and torque output are not affected by battery balance. Resolver is adopted for angle and speed control.



Tool Status LED

Tool status is indicated by 7 different colors for easy recognition by the users. Default is set as Green: OK Yellow: notOK Blue: CW Purple: CCW And other status can be displayed in various ways.

LED Color Indicator











3/8" Square Anvil



Front Light

High brightness LED helps to work in the dim work environment.



Reverse Switch

Just one push to change fastening direction.



Trigger Switch

Smooth operation with soft start function assignable.



Grip

Fit-to-hand ergonomically designed rubber handle grip.



Wireless Communication Technology

Estic Wireless Technolog(EWT) is world's standard IEEE802.15.4/Zigbee embedded wireless technology to meet the requirements of quick startup, low current consumption, long distance communication.



LED backlight LCD

Items below are displayed on LCD Valid Channel Batch Count Torque and Angle Judge Battery Charge Wireless Reception Fastening NG number System Error number



25v 1.5Ah Li-Ion Battery

Adopted High Output, Light-weight Li-Ion Battery Charging time: 60 minutes Cycles per full charge: 500 bolts on hard joint



Features

High fastening accuracy

5% or less at 3-Sigma X-Bar on Pulse mode. (3% or less at 3-Sigma on X-Bar on Direct mode)

Tool Capability

Tool performance test is examined with ISO5393 complied testing equipment.

Self-diagnosis system check

Transducer and circuit board have self-diagnosis function to keep the system running in good condition.

Traceability (Data storage)

Tool Unit stores Fastening result: Max. 30,000 records Torque Curve: OK 20, notOK 10 System Error: 50 records Networking can be built through I/F unit which has Ethernet, RS-232C port with various protocols such as Open Protocol, Chrysler PFCS, Global Pokayoke

Process Control

Various functions are available on Handy 2000 Cordless system to keep your assembly process functional. Multi fastening strategies on one tool Channel, Multi Channel, JOB function, Batch Count Various monitoring functions Seizing, Re-hit, Self-tapping, zone monitor Various fastening methods Torque control, Angle control, Torque and/or Angle control Internal PLC function and more...

Pulse Drive Mode (Patented technology)

Pulse drive mode is ESTIC's patented technology which greatly reduces reaction force. ESTIC launched the first electric pulse handheld tool in 2007 with corded handheld tool, and now this technology is available on the new battery tool. Pulse Drive Technology brings you both accuracy and productivity for your assembly works.

Patent (U.S.A) US7,770,658 B2 US6,680,595 B2

Patent (Japan) 5094952 4837498 4699316 4484447 3456949

Interface Unit

Infrared Data Communication

Sending a program file between Tool Unit and Interface Unit can be made through infrared without the two units being connected..

Networking

Ethernet x 1 port RS-232C x 1 port Barcode scanner Management Software Protocols Open Protocol Chrysler PFCS Global Pokayoke

Networking

Server

Data Logger Management Software

Touch Screen (HMI)

Ethernet (LAN)

Handy2000 series Corded Tools

Management Software

Tool Unit

Zigbee Data Communication EWT ESTIC Wireless Technology

Infrared Data Communication

Interface Unit

Handy 2000 Cordless

Barcode Scanner

Signal Light

Interlocking

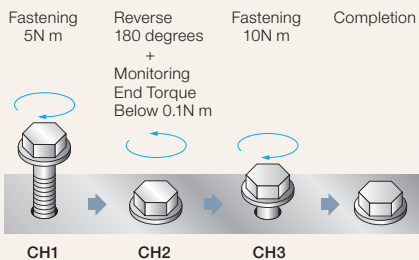
Socket Tray

PLC

Battery Tool Handy 2000 cordless

Channel/Multi Channel

Maximum of 99 fastening programs can be stored in the controller, which gives flexibility to assemble several areas with single tool.



Select Multi Channel No.

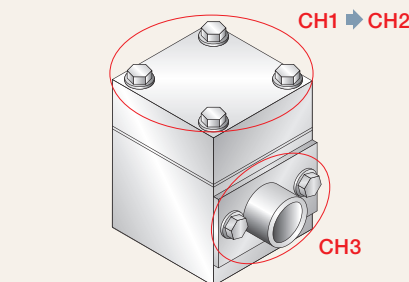
MC1 (Multi Channel 1)	
Stage	CH
1	1
2	2
3	3

Fastening OK

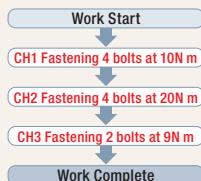
Multi Channel is the function to run several fastening programs continuously with one time trigger switch pressing.

JOB Function

JOB is used to fasten multi bolts with multi fastening strategy in sequence. Up to 99 JOB can be programmed and stored in the controller, and up to 30 Steps can be programmed in 1 JOB.



Work Flow



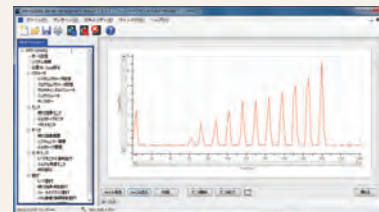
JOB Function

Select JOB No.		
JOB1		
step	CH	Count
1	CH1	4
2	CH2	4
3	CH3	2

JOB OK

Management Software

ESTIC's software is user friendly interface to edit fastening and system parameters. Various functions including fastening results monitor and torque curve monitor are in one package.



Tool Unit Basic Specifications

Model	Drive Mode	Torque Range		Max.Speed	Output Drive		Weight		Length		Distance from the center	
		(N m)	(ft lb)	(rpm)	(mm)	(inch)	(Kg)	(lb)	(mm)	(inch)	(mm)	(inch)
EHC-R0005-PZ*	Pulse/Direct	1.0- 5.0	0.8-3.6	1215	9.5	3/8	1.3	2.86	217	8.54	21.5	0.84
EHC-R0008-PZ*	Pulse/Direct	2.0- 8.0	1.5-5.8	789	9.5	3/8	1.3	2.86	217	8.54	21.5	0.84
EHC-R0012-PZ*	Pulse/Direct	3.0-12.0	2.2-8.8	538	9.5	3/8	1.3	2.86	217	8.54	21.5	0.84
EHC-L0026-PZ*	Pulse Only	6.0-26.0	4.4-19.1	780	9.5	3/8	1.56	3.43	241.5	9.5	21.5	0.84

*1: Japan *2: USA, Canada

Interface Unit



EHC-IF10-Z*
AC100 ~ 200V Single Phase

*1: Japan *2: USA, Canada

Lithium Ion battery



BPL-2515ES
Rated Output: DC25V 1.5Ah
Overcharge/Over Discharge Prevention Function
Weight: 0.54Kg

Battery Charger



BC0075G
AC100 ~ 200V Single Phase
Overcharge Prevention Function

Management Software



EH2-PC
Ver. 7.30 or later version can be commonly used for Handy2000 Cordless and Handy2000 (Corded) series.
Applicable OS
Windows XP/Vista/7 32Bit/7 64 Bit

ESTIC

With us, the Future

ESTIC CORPORATION

www.estic.co.jp

Head Office & Osaka Sales Office
International Department

2-5-9 Hashibahigashino-cho, Moriguchi-shi, Osaka, 570-0031 Japan
Phone : +81-6-6993-8835 Fax : +81-6-6993-8881
E-mail : int_dep@estic.co.jp

Tokyo Sales Office

2F Shinyokohama Bousai Bldg., 3-20-12 Shin-Yokohama, Kouhoku-ku, Yokohama-shi, Kanagawa Pref. 222-0033, Japan
Phone : +81-45-474-3036 Fax : +81-45-474-3037
E-mail : tokyo_office@estic.co.jp

Chubu Sales Office

4F Yamahichi Higashiokazaki Bldg. 19-13 Kawabata, Myoudaiji Cho, Okazaki-shi, Aichi, 444-0864, Japan
Phone : +81-564-66-0510 Fax : +81-564-66-0515
E-mail : chubu_office@estic.co.jp

SUBSIDIARIES

SHANGHAI ESTIC CO., LTD. 6th Plant, 51 Gate, 1159, East Kangqiao Road, Pudong, Shanghai, China
Phone : +86-21-6813-0333 Fax : +86-21-6813-0777
E-mail : ecc@estic.cn

ESTIC (THAILAND) CO., LTD. 19 Naradhiwas Rajanakarin Road, Chong Nonsi, Yannawa, Bangkok, 10120, Thailand
Phone : +66-2-678-0171 Fax : +66-2-678-0173
Email : sales@estic.co.th

ESTIC AMERICA, INC. 1895 Airport Exchange Blvd, Suite 220, Erlanger, Kentucky 41018 U.S.A.
Phone : +1-859-746-8800 Fax : +1-859-746-8777
Email : support@estic-america.com

- The colors of the products may slightly differ from those of the actual products, which inevitable in printing.
- The specifications and designs of the products may be changed without previous notice.



This catalog uses vegetable oil ink.

The contents of the catalog are as of November, 2014.